

# Replace Vent Solenoid

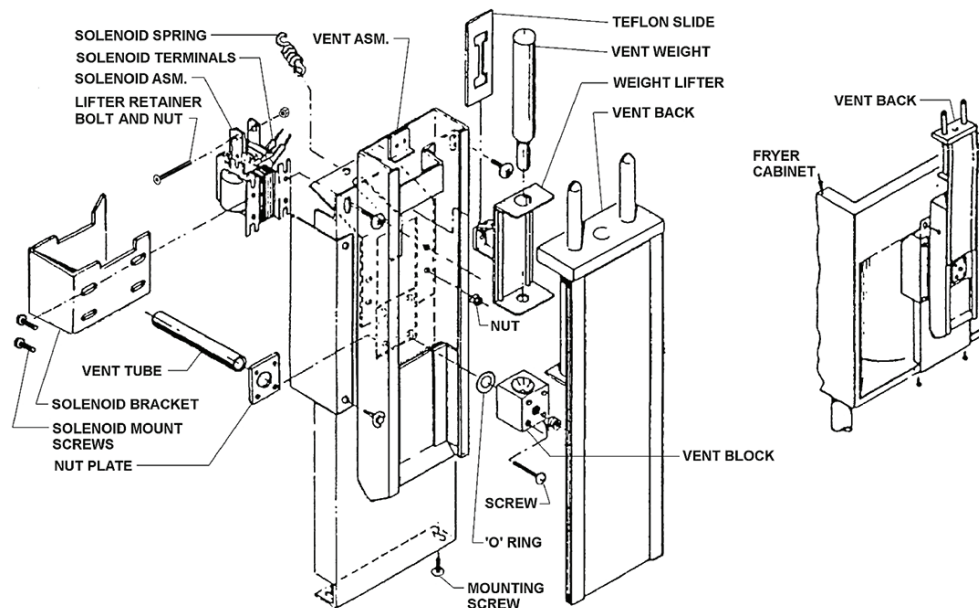
## INSTRUCTION MANUAL

**TOOL(S) NEEDED**

- Phillips screwdriver
- 5/16" nut driver
- 11/32" open end or socket wrench
- Needle nose pliers
- 3/8" nut driver
- 3/32" Allen wrench

### INSTRUCTIONS:

1. Disconnect fryer from power supply or turn circuit breaker OFF.
2. Remove muffler assembly, vent back, and dead weight.
3. Remove vent block and o-ring. Discard o-ring; do not reuse.
4. Remove four screws that attach vent assembly to fryer cabinet and disconnect two wires from solenoid.
5. Carefully pull vent assembly loose from fryer.
6. Remove solenoid spring, lifter retainer bolt and nut (there may be a cotter pin here on some fryers) and hardware holding galvanized solenoid bracket in place.
7. Remove solenoid from galvanized bracket and replace with new component. Be sure that new solenoid is mounted as low as possible on the galvanized bracket (push solenoid down fully before tightening screws).
8. Secure galvanized bracket and solenoid to vent assembly. As in Step 7 above, when mounting bracket to vent assembly, push bracket down as far as it will go before tightening screws.
9. Place Teflon slide on weight lifter, insert weight lifter tongue through slot in vent assembly and attach to solenoid with lifter retainer bolt.
10. Attach one end of solenoid spring to weight lifter and other end to galvanized bracket.



**Buy Winston service parts online!**  
 Factory direct at [www.winstonparts.com](http://www.winstonparts.com)

- 
11. Place nut plate onto end of vent tube and attach vent assembly to fryer cabinet with four screws (Note: Vent tube should protrude approximately 1/2 inch through hole in vent assembly).
  12. Place new o-ring over end of vent tube and attach vent block with four screws into nut plate.
  13. Reconnect vent wires to solenoid terminals.
  14. Clean and replace dead weight, vent back and muffler.
  15. Place fryer back into service.

**Buy Winston service parts online!**  
Factory direct at [www.winstonparts.com](http://www.winstonparts.com)

