

Fryer Tray Bracket Installation - PS3143

INSTRUCTION MANUAL

TOOL(S) NEEDED

- Drill
- 5/16" Drill bit
- Phillip's head bit
- Ratchet
- 7/16" Socket

KIT CONTENTS:

- (1) Tray Bracket - left hand
- (1) Tray Bracket - right hand
- (2) Gaskets
- (2) Carriage bolts
- (2) Nylon nuts
- (2) Washers
- (4) Screws

INSTRUCTIONS:

1. **Unplug fryer before beginning installation!**
2. Remove four screws from escutcheon (**Figure 1**), allowing access to inside of fryer.
3. Remove four screws that hold relay panel (**Figure 2**). Rest relay panel on fryer bottom.

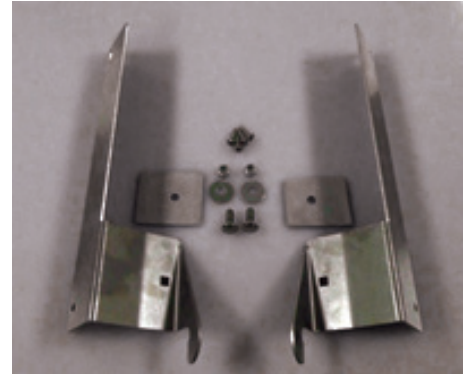


Figure 1



Figure 2

Buy Winston service parts online!
Factory direct at www.winstonparts.com

4. Remove and save the two front screws on each side (Figure 3).
5. Mount bracket on each side using two removed screws (Figure 4). Then mark holes with a marker (Figure 5).
6. Remove brackets and drill out holes using 5/16" drill bit (Figure 6).
7. Place gasket under bracket, mount bracket using two side screws (Figures 7, 8, & 9).



Figure 3



Figure 4



Figure 5

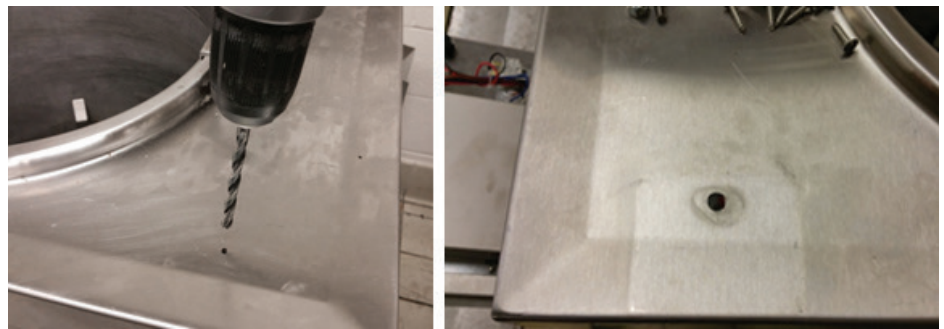


Figure 6

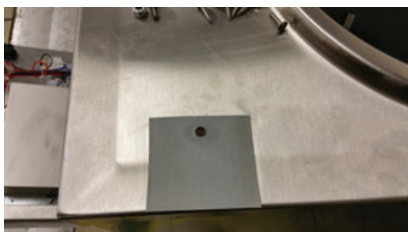


Figure 7



Figure 8



Figure 9

Buy Winston service parts online!
Factory direct at www.winstonparts.com

8. Insert carriage bolt into bracket top holes and tighten using 7/16" socket and ratchet (**Figures 10 & 11**).
9. Replace relay panel and front escutcheon that was removed in Steps 2 & 3.



Figure 10



Figure 11



Buy Winston service parts online!
Factory direct at www.winstonparts.com