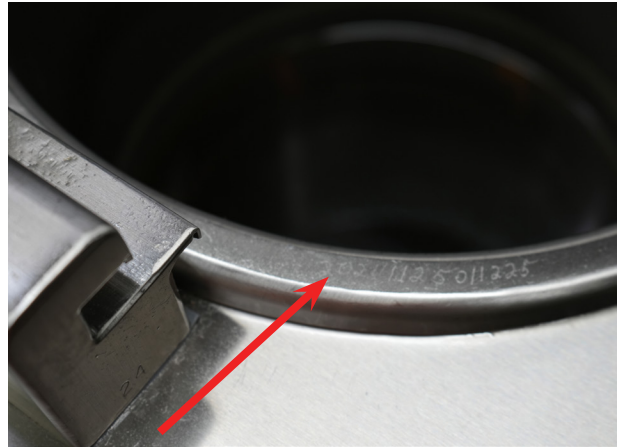


Winston Collectramatic Serial Number Locations & Description

Winston Collectramatic Fryer Serial Number Locations



1. Right side of the fryer



2. Etched into the right front of the pot rim.



3. Inside the right rear panel.



4. On older models, the serial tag can be found on the front panel in the lower left hand corner.

Winston Serial Tag Information

Serial Number

GENERAL USE AND CARE INSTRUCTIONS

1. See Use and Care Manual for full instructions and warnings.
2. Do not stir cooking oil until after Drop message appears.
3. Bottom of collector must be hot to touch before cooking.
4. Insert heat plate. Check that oil level is between max/min lines.
5. Use safety gloves, lower basket, close and lock lid, and start timer.
6. At end of cooking cycle, see instructions on lid for opening lid.
7. Using drain hook, remove basket. Scrape crust line with spatula.

Model Number → Model No: **PF56C11SJ** Serial No: **20240821009922**

Manufacture Date → Month/Yr: **08/24** Options: **U11** → Options

Voltage → Voltage: **208 V** Frequency: **60 Hz** → Frequency

Amperage → Current Line 1: **29.2 A** Power Rating: **10.5 kW** → Power Rating

Current Line 2: **29.2 A** Oper. Pressure: **11.9 PSI**

Current Line 3: **29.2 A** Oper. Pressure: **0.082 MPa**

Scan for support, downloads, and warranty registration

Winston 2345 Carton Drive | Louisville, Kentucky 40299 USA
foodservice winstonfoodservice.com | 800.234.5286 | +1.502.495.5400 LA001AS111 rev02

Please Note: If the model number starts with a **PS**, this indicates that the unit has received an upgrade kit. The serial number on the tag is for the upgrade kit, not the fryer. Utilize the rim pot serial number or the tag inside the right rear panel.