

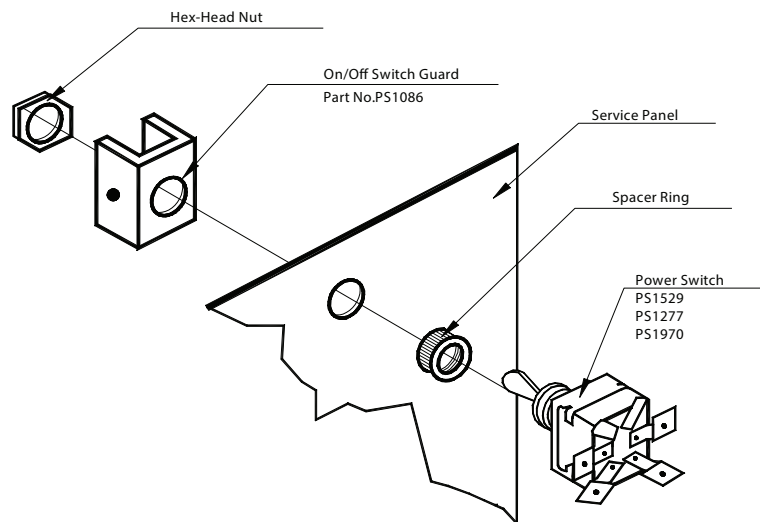
# Replace Power Switch

## INSTRUCTION MANUAL

**DANGER! - Service of this equipment causes one to encounter electrical and high temperature hazards** capable of producing property damage or inflicting serious injury or death. Any person attempting diagnosis and repair involving removal of panels and/or exposure to live electrical terminals must be trained or experienced in such service procedures.

### INSTRUCTIONS:

1. Shut off power to cabinet at circuit breaker and unplug cord from wall outlet.
2. Open front service panel or remove top of cabinet where pertinent (on fryer, eyebrow must be removed first).
3. Remove hex-head nut that secures On/Off switch guard to service panel.
4. Remove power switch from service panel (do not disconnect wires).
5. Install replacement power switch and use the spacer ring for proper spacing corresponding to the On /Off switch guard.
6. Install On/Off switch guard, and secure with hex-head nut.
7. Remove a wire from defective power switch and attach it to same terminal of replacement power switch, (check for accuracy) until all wires are transferred.
8. Close service panel or replace top of cabinet where pertinent.
9. Plug in power cord and turn on circuit breaker.



**CAUTION:** Before applying electrical power, check for proper connections by referring to the electrical wiring diagram.

**Buy Winston service parts online!**  
Factory direct at [www.winstonparts.com](http://www.winstonparts.com)

