

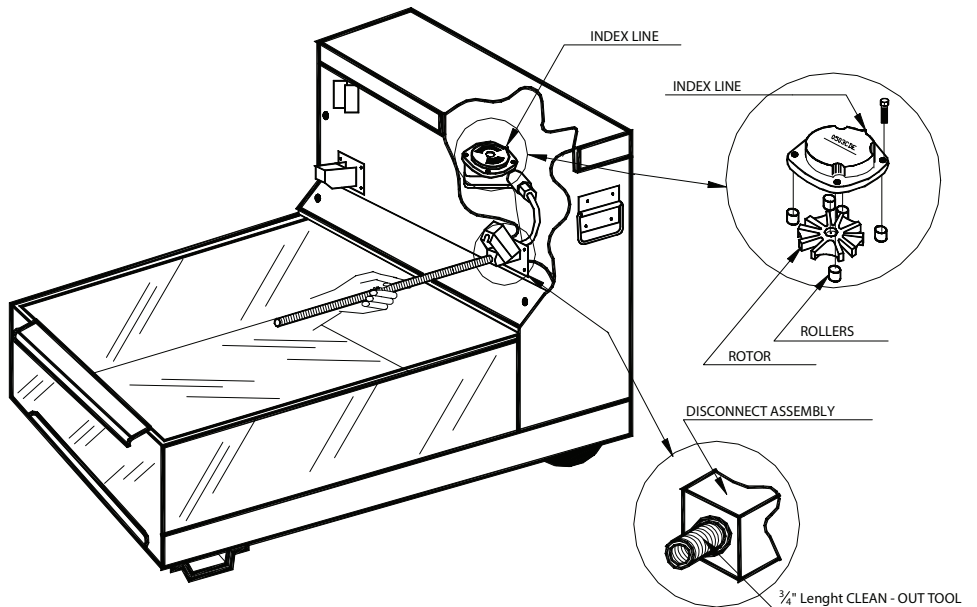
# Shortening Tender Clean-Out Tool

## INSTRUCTION MANUAL

**Note:** If solid shortening is used in fryer and shortening tender hoses are left attached to shortening filter after pumping, shortening will drain into pump and internal hoses, solidify, and prevent shortening filter from pumping.

### INSTRUCTIONS:

1. Turn off shortening filter motor and disconnect power cord from wall outlet.
2. Insert clean-out spring into hose disconnect assembly and jog it back and forth until it bottoms out against pump rotor leaving  $\frac{3}{4}$ " of spring showing out of connector, as illustrated below.



3. Remove spring; plug in power cord; turn on pump. Make sure connected hoses are cleared of solidified shortening.

### IF SHORTENING FILTER STILL DOES NOT PUMP, PROCEED AS FOLLOWS:

1. Turn off shortening filter motor and disconnect power cord from wall outlet.
2. Remove cabinet top.
3. Remove four bolts from cap of pump.
4. Lift cap off pump and clean solidified shortening from rotor, five rollers, and pump parts (when replacing pump cap, be certain to match index lines).
5. Reassemble.

**TO PREVENT SHORTENING FROM SOLIDIFYING IN PUMP, SHUT OFF PUMP MOTOR AFTER PUMPING. DISCONNECT HOSES AND WAND AND DRAIN INTO FILTER TANK. LEAVE HOSES AND WAND DISCONNECTED UNTIL READY FOR NEXT USE.**

**Buy Winston service parts online!**  
Factory direct at [www.winstonparts.com](http://www.winstonparts.com)