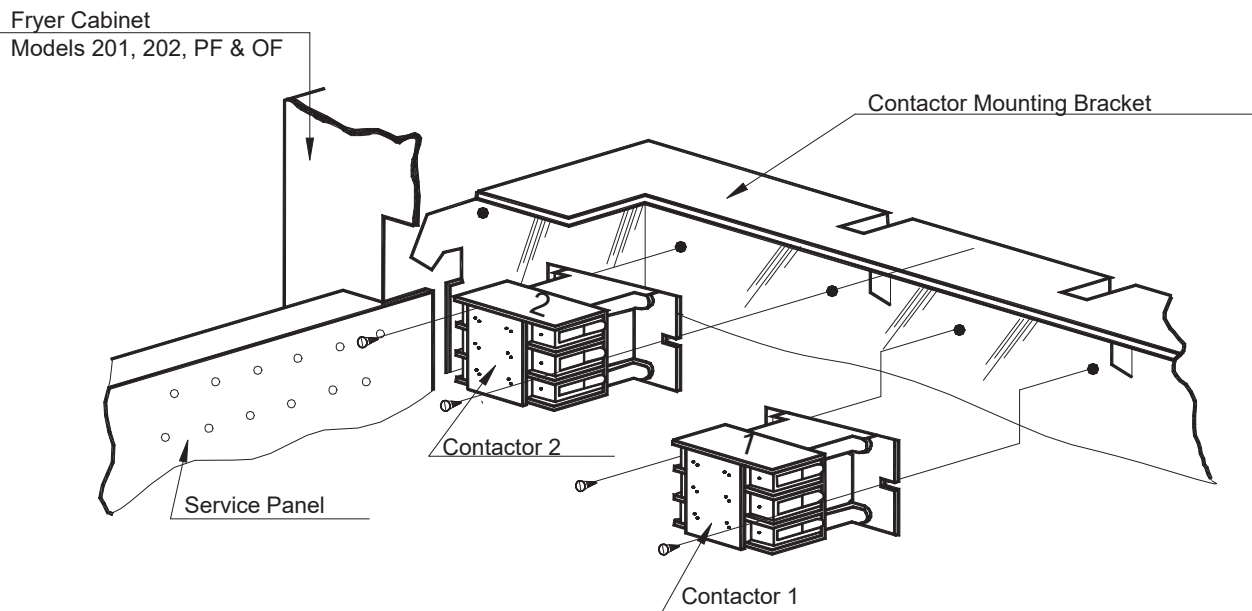


Replace Contactor/Relay INSTRUCTION MANUAL

INSTRUCTIONS:

1. Shut off power to fryer at circuit breaker and unplug cord from wall outlet if possible.
2. Open service panel as shown (some service panels are hinged on the left and will swing open to the left, others will hinge at the bottom).
3. Loosen two screws that hold contactor to fryer (**DO NOT DISCONNECT ANY WIRES AT THIS POINT**).
4. Install replacement contactors making certain the two magnetic coil terminals are facing same direction as the terminals on the defective contactor.
5. Transfer wires one at a time from defective contactor to replacement, L1 to L1, L2 to L2, etc.
6. Tighten all terminal screws securely.
7. Close service panel, plug in cord, and turn on circuit breaker.



Double Contactor Model

Buy Winston service parts online!
Factory direct at www.winstonparts.com