

Fryer Upgrade Kit/ Surface Mount Control INSTRUCTION MANUAL

Upgrade 101, 201, OF, or PF Model Winston Collectramatic Fryers

TOOL(S) NEEDED:

- Phillips head screw driver
- Open end wrenches (9/16", 11/16" & 7/8")
- Wire cutters & strippers
- Volt meter
- Slotted screw driver
- 3/8" nut driver
- Drill
- Marking pencil
- Small channel locks

The following spare parts may be needed, depending on the condition of the equipment.

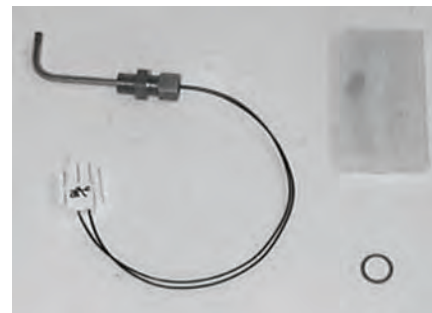
1. Heater Wires (silicone insulated)
2. Cook Pot Insulation Set
3. Assorted Crimp-on Terminals (Insulated)

KIT CONTENTS

The Winston "Surface Mount" Control Upgrade Kit contains all components necessary to upgrade 101, 201, OF or PF model Collectramatic® Fryers. Be sure to check all components before getting started. Contact Winston's Customer Care Team at (800) 234-5286 if any of these components are missing.

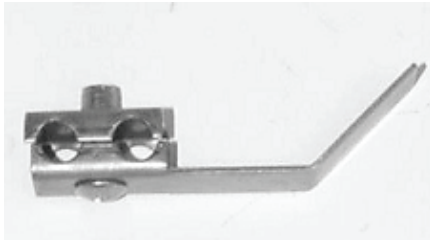


Item #1 Escutcheon/Relay Panel
Assembly (qty 1)

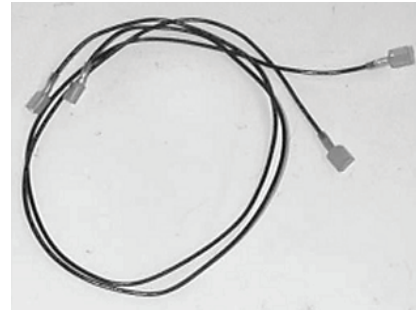


Item #2 Thermistor Probe Kit (qty 1)

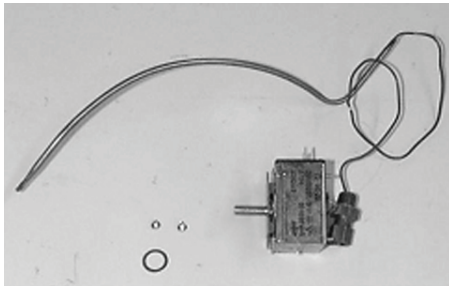
Buy Winston service parts online!
Factory direct at www.winstonparts.com



Item #3 Probe Guard & Clamp (qty 1)



Item #4 Vent Solenoid Extension Wires (qty 2)



Item #5 High Limit Thermostat (qty 1)



Item #6 Terminal Cap (may not be needed) (qty 2)

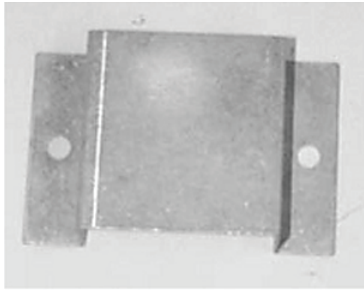


Item #7 Plug (qty 1)



Item #8 Speaker Mount Bracket (qty 1)

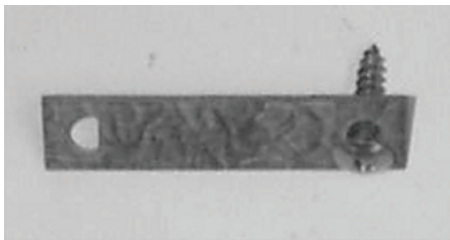
Buy Winston service parts online!
Factory direct at www.winstonparts.com



Item #9 Speaker Guard (qty 1)



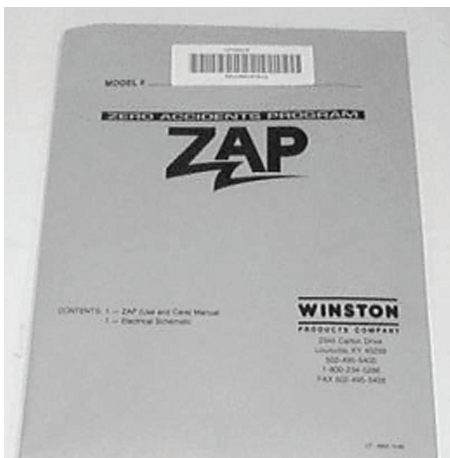
Item #10 Probe Mounting Gauge
(qty 1)



Item #11 High Limit Locking Bracket
with Screw (qty 1)



Item #12 Probe Extension Wire (may
not be needed) (qty 1)



Item #13 ZAP Envelope Contains:

- Lid Lock Label & Instructions
- ZAP Registration Form
- Installation Instructions Manual
- Wiring Diagram
- Use & Care Information

(qty 1)

Buy Winston service parts online!
Factory direct at www.winstonparts.com

INSTALLATION INSTRUCTIONS

These instructions are written for qualified service technicians who have knowledge of the operation and use of Collectramatic® fryers. Those without such training should not attempt the upgrade kit installation.

NOTE: When performing the following procedures, save all screws for re-use.

STEP 1:

- A. Disconnect power to fryer (See figure 1).
- B. Drain shortening into a suitable container or shortening filter.
- C. Remove the two screws securing eyebrow to fryer.
- D. Remove the four screws securing escutcheon to fryer.



Figure 1

STEP 2:

- A. Disconnect power cord from relay #1 (See figure 2).
- B. Loosen screw to remove ground or neutral wire (depending on configuration) from terminal.
- C. If power cord is secured to relay panel by a strain relief clamp, loosen screws in clamp to enable relay panel to be removed in Step 6.



Figure 2

STEP 3:

- A. Clip all main harness wires and operating thermostat capillary tube at wire clamp location on hinged side of escutcheon (See Figure 3). Remove the screw securing wire clamp to cabinet side.

NOTE: Determine voltage of fryer by observing model number on identification tag. The letter "J" at the end of the model number denotes 208V and "M" denotes 240V. This information will be needed in step 14.

- B. Remove escutcheon assembly and discard.

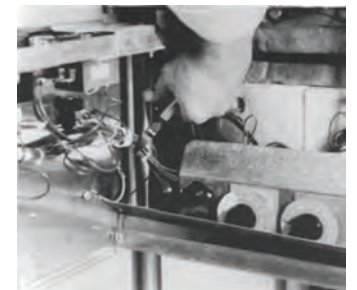


Figure 3

Buy Winston service parts online!
Factory direct at www.winstonparts.com

STEP 4:

- A. Clip the thermostat capillary tube(s) and wires leading from the thermostat/fuse panel to relay #1 (see figure 4).
- B. Remove the two screws securing the thermostat/fuse panel to the bottom panel and discard (see figure 5).

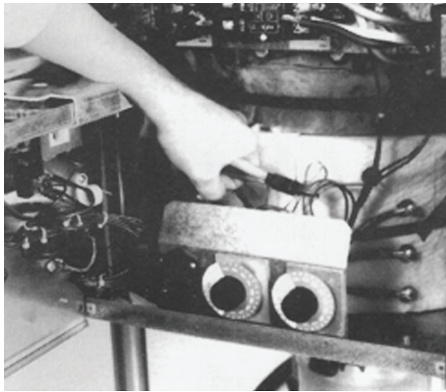


Figure 4

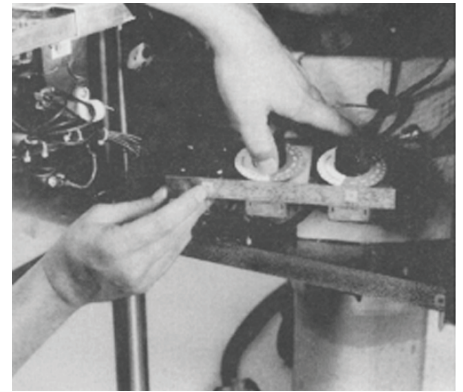


Figure 5

STEP 5:

Remove the six nuts securing the heater wires to the heater terminals. (Save these nuts and flat washers for re-use.)

STEP 6:

Remove the four screws (two on each side) securing the relay panel to the fryer (see figure 6).

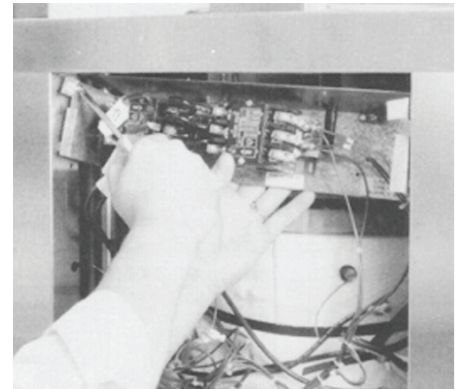


Figure 6

STEP 7:

- A. Remove the clamp securing the high limit thermostat bulb to top heater coil (see figure 7). Save this clamp for re-use.
- B. Remove the two clamps securing the operating and low range (if applicable) thermostat bulbs to the heater coils.

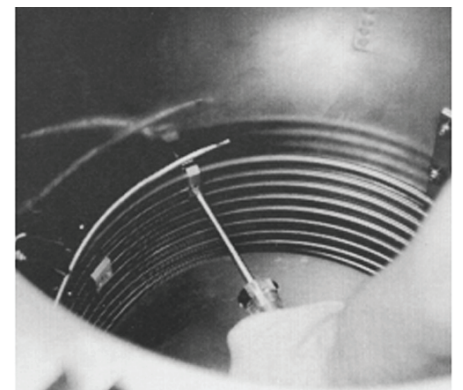


Figure 7

Buy Winston service parts online!
Factory direct at www.winstonparts.com

STEP 8:

- A. Rotate insulation strap, if necessary, to gain access to buckle. Loosen strap and remove the two front sections of insulation. Save these sections for re-use.
- B. Remove the compression nuts (9/16") and bushings (11/16") securing high limit, operating and low range (if applicable) thermostat bulbs to cook pot (see figure 8).
- C. Loosen nuts securing the two forward heater holders to the cook pot (these are inside the pot) and push back, allowing thermostat bulbs to be removed.
- D. Remove thermostat bulbs from the cook pot.
- E. Insert coils back into proper grooves in heater holders and tighten the nuts securing the holders to the pot.
- F. Place flat washer on plug (item #7, page #4). Insert plug and washer into the operating thermostat entrance hole (bottom left pot bushing) and tighten.



Figure 8



Figure 9

STEP 9:

NOTE: Disregard this step when upgrading model 101 or OF49T open fryers.

- A. Remove muffler from back of fryer by pushing down on top of muffler and pulling back at bottom.
- B. Remove the screws securing right hand back panel to fryer. (**NOTE:** It is not necessary to remove the vent assembly.)
- C. Disconnect vent solenoid extension wires and insulated sleeves from vent solenoid wires and discard (see figure 9).
- D. Attach the two vent solenoid extension wires (item # 4, page 3) to vent solenoid wires. Run wires along right hand side of cook pot to front of fryer.
- E. Replace the screws securing back panel to fryer.
- F. Place muffler back onto fryer.

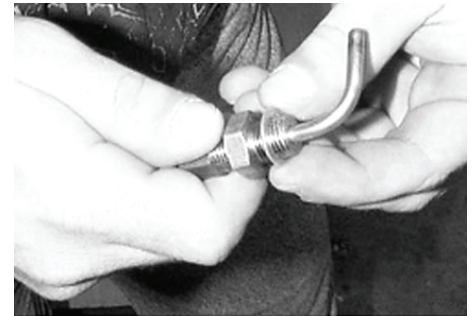


Figure 10

STEP 10:

- A. Place aluminum washer against bushing on thermistor probe (item #2, page 3) (see figure 10).
- B. Carefully insert probe tip into low range thermostat entrance hole (upper right pot bushing). Secure bushing to cook pot using 11/16" open end wrench.
- C. Using included gauge (item #10, page 4) to hold probe tip in proper position, tighten probe compression nut using 9/16" open end wrench (see figure 11).



Figure 11

Buy Winston service parts online!
Factory direct at www.winstonparts.com

STEP 11:

- A. Position probe guard (item #3, page 3) 1/2" to the left (as viewed from rear of fryer) of probe tip and secure to clamp along the top two heater coils (see figure 12).

STEP 12:

- A. Place aluminum washer against bushing on high limit thermostat (item #5, page 4).

CAUTION: Use care not to damage thermostat capillary tube when performing the following steps.

- B. Insert high limit thermostat bulb through high limit thermostat bulb entrance (upper left pot bushing). Secure thermostat bushing to cook pot using 11/16" open end wrench. Position thermostat bulb in slot of heater holder just above top heater coil and secure with clamp removed in step 7.
- C. Slide ferrule over thermostat bulb and tighten compression nut using 9/16" open end wrench. (**NOTE:** Approximately 1" of thermostat bulb should extend beyond compression nut.)
- D. Place insulation pieces back into position and secure in place by tightening strap.

STEP 13:

- A. Place speaker mounting bracket (item #8, page 4) on bottom panel at approximately 3/8" from front lip and mark hole pattern with pencil (see figure 13).
- B. Drill one 3/16" hole at each marked point to allow for bracket mounting.
- C. Drill sixteen 3/16" holes in a 1-1/2" round or square pattern in the bottom panel underneath the center of the speaker for the sound to escape.
- D. Insert white plastic grommets into square holes in mounting bracket (see figure 14).
- E. Secure mounting bracket to bottom panel using two sheet metal screws. (Bracket should be positioned so that side with circular hole is facing upward.)

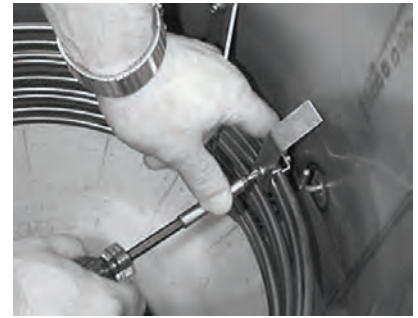


Figure 12

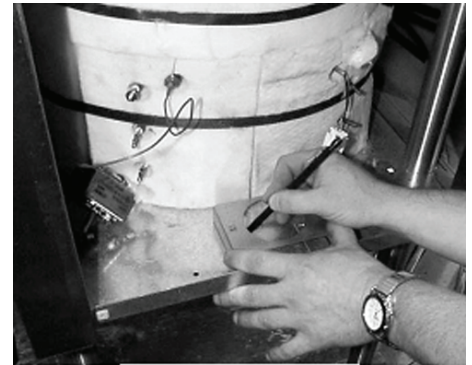


Figure 13

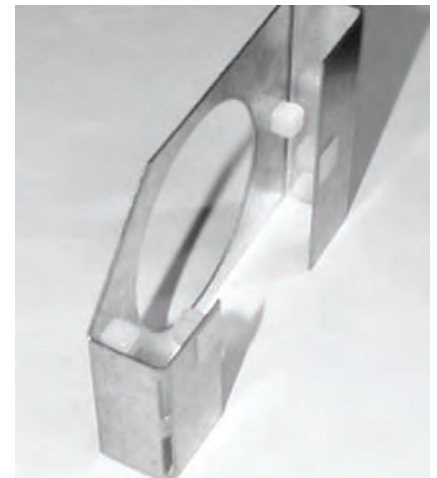


Figure 14

Buy Winston service parts online!
Factory direct at www.winstonparts.com

STEP 14:

- A. The new escutcheon/relay assembly (item #1, page 1) has two voltages (208V & 240V) and the corresponding amperages on the identification tag. Remove the incorrect voltage and amperage by scratching off with a slotted screw driver. Refer back to step 3 regarding proper voltage.
- B. Mount hinge bracket of escutcheon/relay assembly onto lip of fryer's bottom panel (see figure 15).

CAUTION: Use care in preventing relay panel from falling unsupported when performing this step:

- C. Remove two screws securing escutcheon to relay panel.

NOTE: Proceed to step E when upgrading Canadian model fryers.

- D. With electrical terminals facing downward, insert shaft of high limit thermostat into 5/16" hole located on the relay panel to the right of the #1 contactor. Line up holes in thermostat housing with holes in relay panel and secure with two screws provided in the thermostat kit (see figure 16).
- E. CANADIAN FRYERS ONLY: Secure the two double wire terminals labeled "COM" (common) and "NC" (normally closed) to the high limit thermostat. Line up holes in thermostat bracket with holes in relay panel and secure with the two screws provided in the thermostat kit. (Proceed to step G).
- F. Place high limit thermostat locking plate (item #11, page 5) onto shaft of thermostat. Rotate shaft until hole in plate lines up with grommet in relay panel. Insert and tighten screw to secure in place (see figure 17).

CAUTION: Be sure to position capillary tube of high limit thermostat away from heater terminals and other electrical connections.

- G. Line up the two mounting holes in each side of relay panel with holes in side panels of fryer and insert the four sheet metal screws securing panel in position (see figure 18).

Using channel locks, bend eyebrow mounting tabs back so that new escutcheon assembly can be mounted.

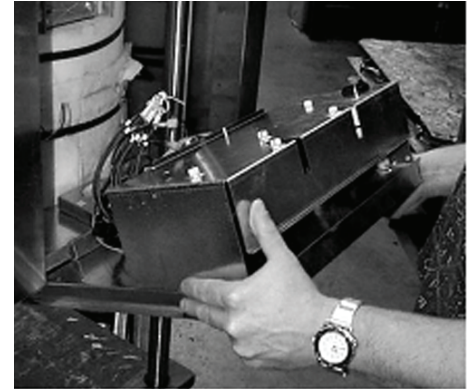


Figure 15

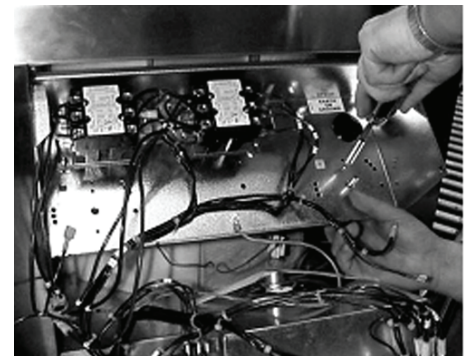


Figure 16

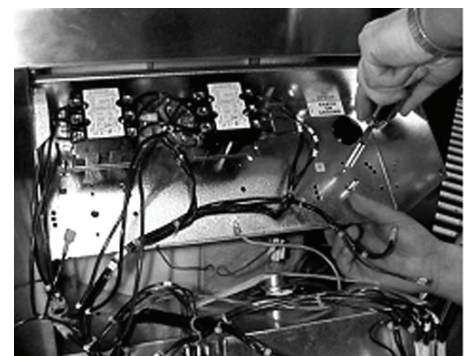


Figure 17

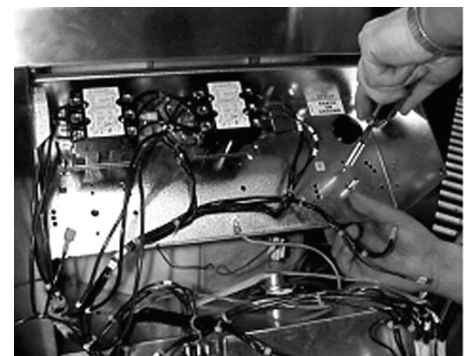


Figure 18

Buy Winston service parts online!
Factory direct at www.winstonparts.com

STEP 15:

Place speaker onto speaker mounting bracket and secure with two screws (see figure 19).

STEP 16:

NOTE: Disregard step A in this section when upgrading 101 or OF49T model open fryers.

- A. Insert the two vent solenoid extension wires installed in step 9 into the two insulated harness terminals (see figure 20).
- B. Push the two high limit thermostat wires onto the high limit thermostat terminals (see figure 21).
- C. Plug the double-wire probe connector into the female receptacle located at the base of circuit board housing assembly (see figure 22).

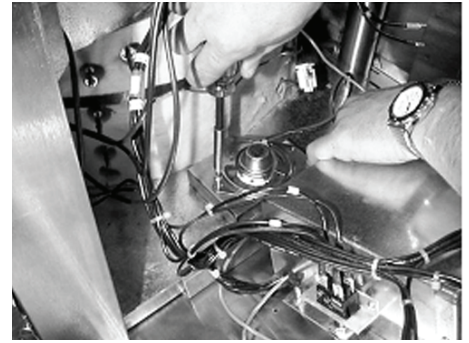


Figure 19

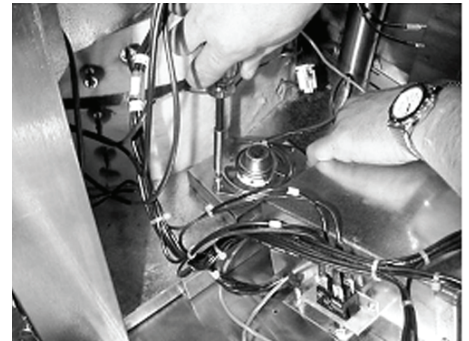


Figure 20

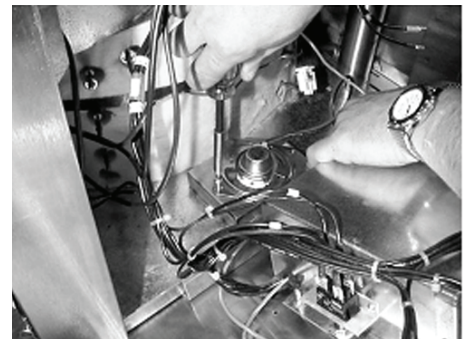


Figure 21

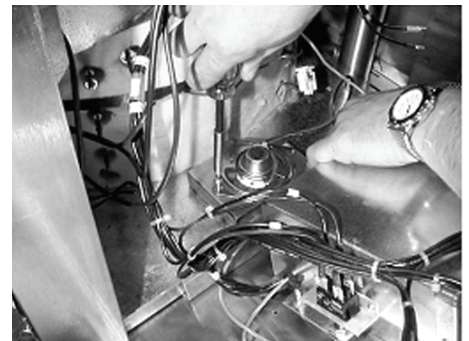


Figure 22

Buy Winston service parts online!
Factory direct at www.winstonparts.com



STEP 17:

- A. Place the six flat metal washers, removed in step 5, onto the six heater terminals.
- B. Place the three heater wires from the #2 contactor onto the three left-hand heater terminals (wires are labeled "T" for TOP, "M" for MIDDLE, and "B" for BOTTOM).
- C. Place the three heater wires from the #1 contactor onto the three right hand heater terminals (wires are labeled "T" for TOP, "M" for MIDDLE, and "B" for BOTTOM).

CAUTION: To avoid possible damage to the heaters, carefully read the following step before proceeding.

- D. Thread the nuts, removed in step 5, onto the heater terminals and tighten using a 3/8" nut driver and channel locks, to avoid twisting off heater leads (see figure 23).

NOTE: Fryer is now wired for 3-phase application. For conversion to single phase, see below.

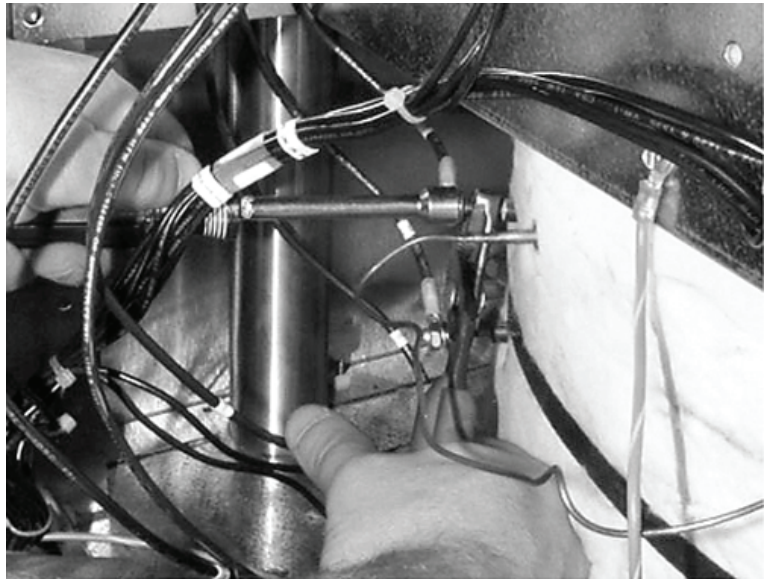


Figure 23

STEP 18:

- A. Route power cord back through hole in relay panel (upper right). Attach ground or neutral wire (depending on configuration) to ground lug or neutral block.
- B. Attach the hot legs from power cord to the large terminals on the right hand side of the #1 contactor.

NOTE: If a "Delta" or "Wild" leg is present, connect this high voltage leg to bottom terminal (L3).

STEP 19:

Replace the four screws securing front escutcheon to fryer.

IMPORTANT: Prior to placing fryer in service, read Owner's Manual information provided for important safety, programming, cooking and cleaning procedures.

Buy Winston service parts online!
Factory direct at www.winstonparts.com



CONVERTING TO SINGLE PHASE

CAUTION: Only 240V-rated fryers may be operated as Single Phase. To avoid damage to fryer electrical components and wiring, 208V fryers should never be wired Single Phase due to excessive current draw (over 50 Amps).

- A. Remove the two wires from terminal T3 of the #1 contactor.
- B. Place the longer of the two wires (leads to the middle heater terminal on the right hand side) into terminal T1 of the #1 contactor.
- C. Place the shorter wire (leads to terminal L3 of the #2 contactor) into terminal T2 of the #1 contactor.

NOTE: Be sure that all electrical connections are tight and that there are no loose strands of wire present.

Buy Winston service parts online!
Factory direct at www.winstonparts.com

